

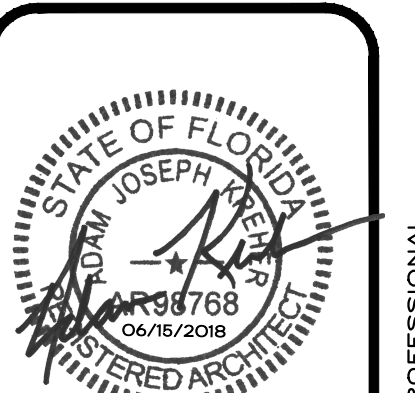
GENERAL NOTES

- A REFER TO PROJECT MANUAL AND SCOPE OF WORK SCHEDULE FOR ADDITIONAL REQUIREMENTS.
- B SITE DIMENSIONS TO FACE OF CONCRETE FOUNDATION, SIDEWALK, CURB GUTTER LINE, PROPERTY LINE, OR CENTER LINE OF STRIPING UNLESS OTHERWISE NOTED.
- C COORDINATE WORK WITH OTHER SITE RELATED DEVELOPMENT DRAWINGS.
- D PRIOR TO INSTALLATION, CONTRACTOR TO VERIFY LOCATIONS OF LIGHT POLES, LANDSCAPING, AND UTILITIES DO NOT CONFLICT WITH SITE SIGN LOCATION SHOWN. REFER TO US1 AND CIVIL FOR UTILITY LOCATIONS. IF CONFLICT IS DISCOVERED, CONTRACTOR TO NOTIFY OWNER'S REPRESENTATIVE PRIOR TO PROCEEDING WITH THE WORK.
- E *COMING SOON* TEMPORARY CONSTRUCTION SIGN TO BE PROVIDED BY CONTRACTOR. APPLIED SIGNAGE GRAPHICS TO BE OWNER FURNISHED AND CONTRACTOR INSTALLED. LOCATE TEMPORARY CONSTRUCTION SIGN ON SITE SO AS TO BE VISIBLE TO PUBLIC FROM RIGHT-OF-WAY. REFER TO DETAIL 1/SG1.2.

SPECIAL NOTE:
 AVOID OBSCURING VISIBILITY OF SITE SIGN FROM RIGHT OF WAY WITH LARGE PLANTINGS AND LANDSCAPING. SUBMIT LANDSCAPING LAYOUT FOR FINAL OWNER REVIEW AND APPROVAL PRIOR TO INSTALLATION.

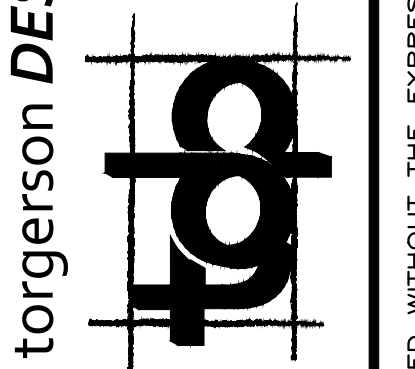
KEY NOTES

- 1 SITE SIGN, REFER TO ELEVATION 2/SG1.2



ARCHITECT OF RECORD
ADAM KREHER
 ARCHITECT LICENSE NUMBER
AR98768
SHEETS BEARING THIS SEAL ARE AUTHENTICATED. RESPONSIBILITY FOR ALL OTHER PLANS, SPECIFICATIONS OR INSTRUMENTS ARE DISCLAIMED.

torgerson **DESIGN** partners
 116 N. 2ND AVENUE
 OZARK, MO 65721
 P (417) 581-8889
 F (417) 581-9002



PROJECT:
NEW O'REILLY AUTO PARTS STORE
 6179 SW HWY 200
 OCALA, FL 34476

SITE SIGNAGE PLAN

O'Reilly AUTO PARTS
 CORPORATE OFFICES
 293 SOUTH PATTERSON
 SPRINGFIELD, MISSOURI 65802
 (417) 862-2674 TELEPHONE

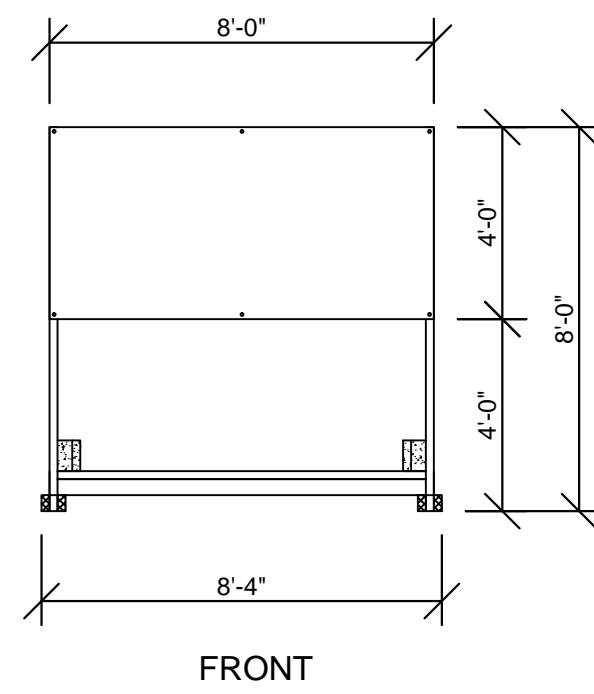
DRAWN BY:	CHECKED BY:
NO	KR
DATE:	
JUNE 15, 2018	
REVISION:	
PROJECT NUMBER:	
18078-OF4	
SHEET NUMBER:	
SG1.1	

1 SITE SIGNAGE PLAN
 SG1.1 SCALE: 1" = 20'-0"

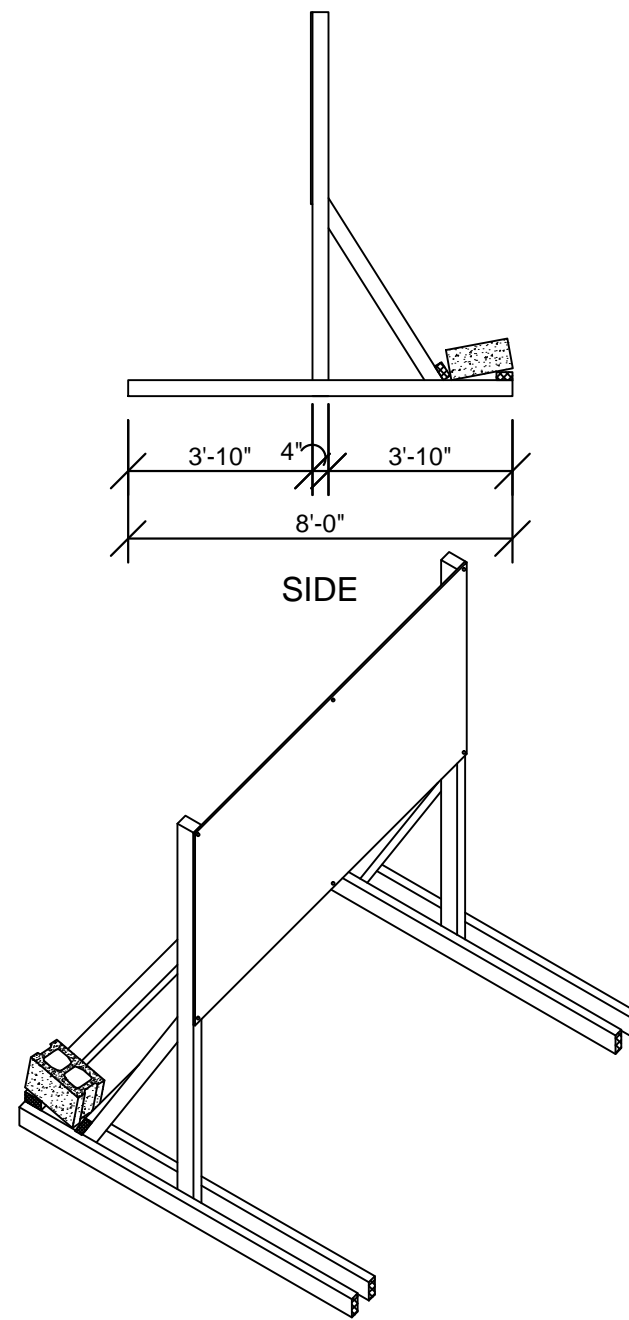
CAUTION:
 INFORMATION ON THIS DRAWING CONCERNING TYPE AND LOCATION OF UNDERGROUND AND OTHER UTILITIES IS NOT GUARANTEED TO BE ACCURATE OR ALL INCLUSIVE. THE CONTRACTOR IS RESPONSIBLE FOR MAKING HIS OWN DETERMINATION AS TO THE TYPE AND LOCATION OF UNDERGROUND AND OTHER UTILITIES AS MAY BE NECESSARY TO AVOID DAMAGE THERETO.



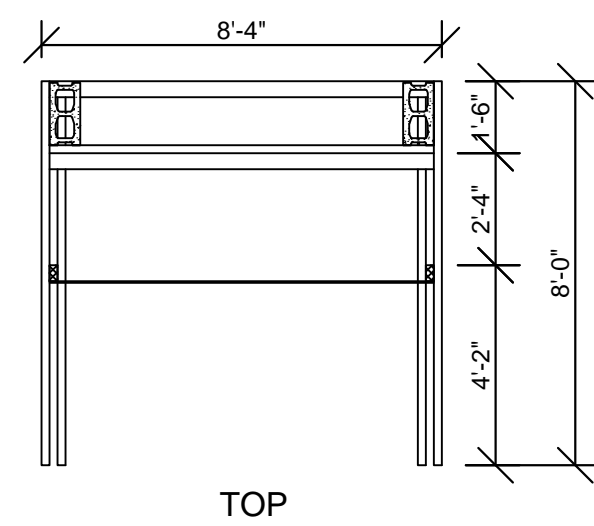
**Know what's below
 Call before you dig.**



FRONT

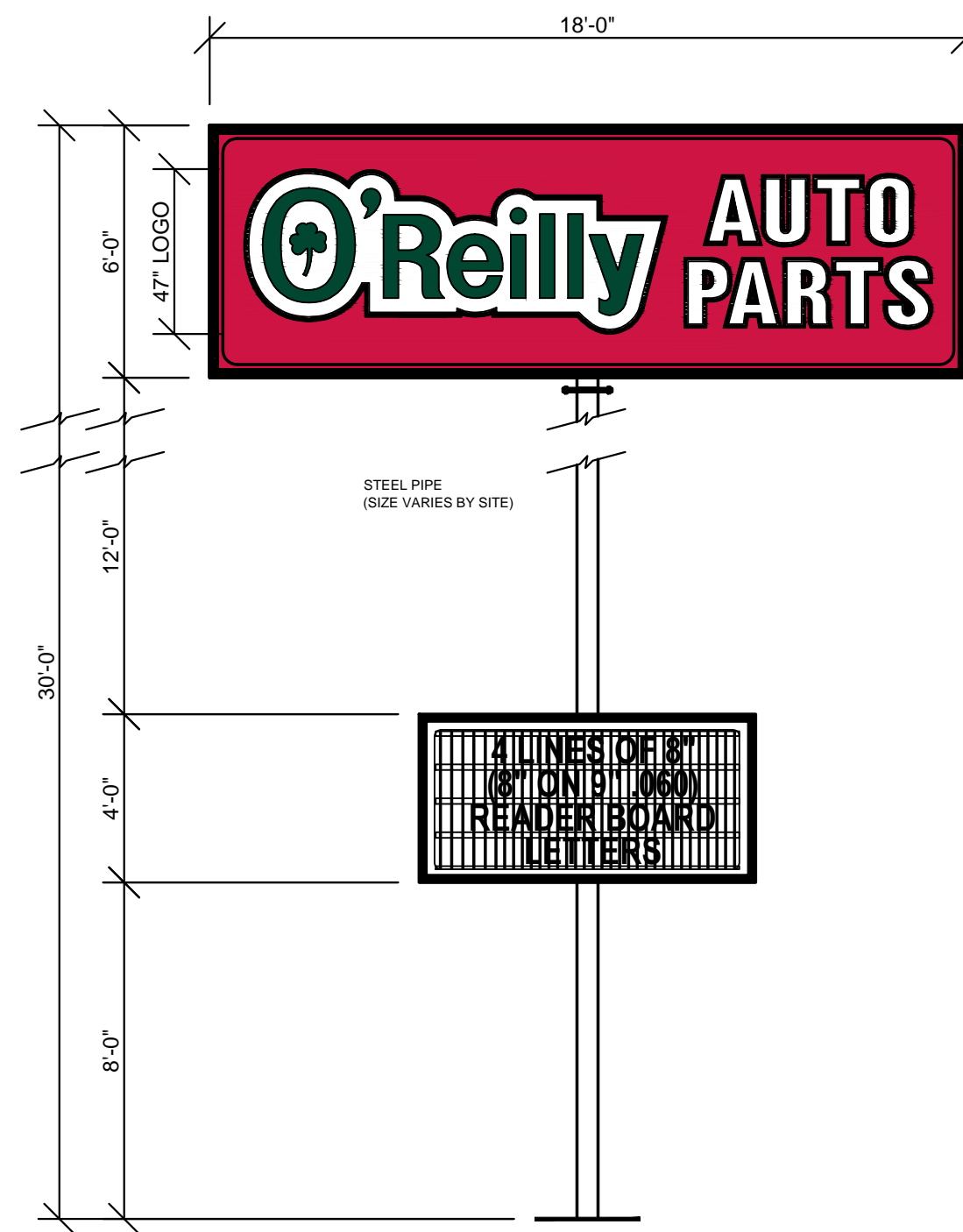


SIDE

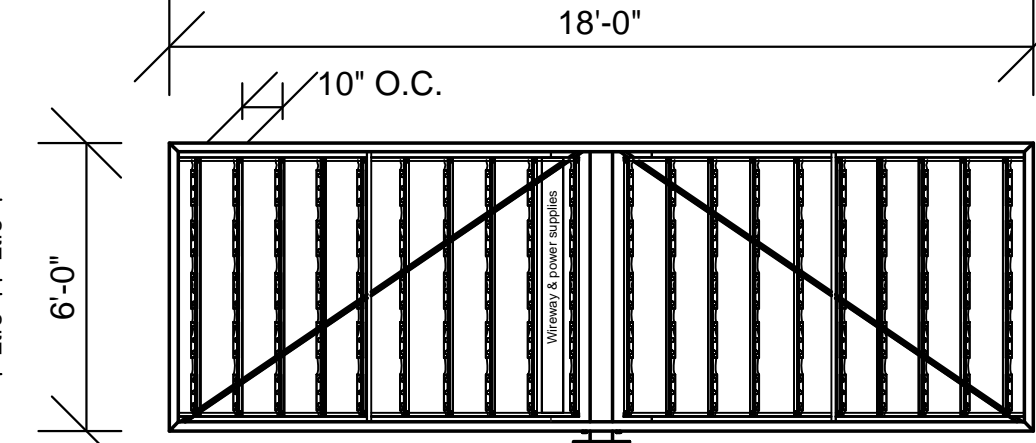


TOP

1 **COMING SOON**
TEMPORARY CONSTRUCTION SIGN
SG1.2 SCALE: 1/4" = 1'-0"

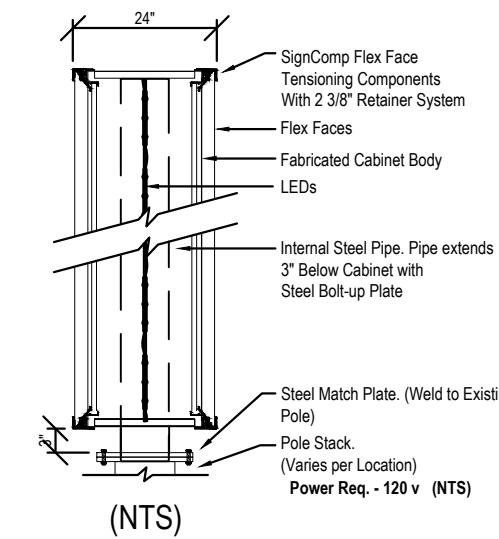


2 **GROUND SIGN ELEVATION**
SG1.2 SCALE: 1/4" = 1'-0"



POLE SIGN PART# 6-18 SIGN CABINET-PE-DF
SCALE: 1/4" = 1'-0" 108.00 SQ FT

- Ⓐ 14-1/2" deep extruded cabinet with support structure and 2 1/4" retainers
 - Ⓑ Internal steel pipe with external steel bolt-up plate(s).
 - Ⓒ GE-Tetra PowerStrip DS White LED's Part #GEWHDSPS6 (7100K) 6 LED's per module (3 LED's per side) on GE-Tetra Mounting Rails, Part #GESRRL08. Rails on 10" centers. 100 total modules.
 - Ⓓ GE-Tetra Power Supplies, Part #GEPS24-180U 24 Volt 90-305VAC, 50/60 HZ Load capacity: 16 modules per power supply, Total of four (4) per display.
 - Ⓔ Fabricated aluminum internal power supply wireway.
- Ⓐ Faces are Panaflex/Digital print. Face graphics to match PMS 200c Red, PMS 342c Green, Black and White.
 - Ⓑ 24" deep fabricated cabinet with SignComp flex face tensioning components and 2 3/8" retainers. Steel pipe with external steel bolt-up plate(s). Vertical GE (GEWHDSPS) White DS LED Illumination. Paint cabinet to: Gloss Black. Internal pipe/cabinet exposure calculation: CB
 - Ⓒ Cabinet to be installed with bolt-up plate(s). Paint to: Gloss Black



(NTS)

GENERAL NOTES

- Ⓐ REFER TO PROJECT MANUAL FOR ADDITIONAL REQUIREMENTS.
- Ⓑ CONTACT OWNER'S OR TENANT'S DESIGNATED PROJECT ADMINISTRATOR FOR QUESTIONS OR CLARIFICATIONS.
- Ⓒ PERMANENT SIGNAGE OWNER FURNISHED AND INSTALLED. (REFER TO SCOPE OF WORK SCHEDULE). SIGNAGE GRAPHICS PROVIDED FOR REFERENCE ONLY (N.I.C.) AND CONTRACTOR'S COORDINATION WITH SPECIFIC PROJECT CONSTRUCTION CONDITIONS.
- Ⓓ SITE SIGN FOUNDATIONS AND ROUGH-IN ELECTRICAL TO BE PROVIDED BY CONTRACTOR.
- Ⓔ REQUIRED GOVERNMENTAL PERMITS FOR PERMANENT TYPE SIGNAGE TO BE PROVIDED BY SIGN COMPANY PER OWNER'S DIRECTION (N.I.C.).
- Ⓕ 'COMING SOON' TEMPORARY CONSTRUCTION SIGN TO BE PROVIDED BY GENERAL CONTRACTOR. APPLIED SIGNAGE GRAPHICS TO BE OWNER FURNISHED AND GENERAL CONTRACTOR INSTALLED. LOCATE TEMPORARY CONSTRUCTION SIGN ON SITE SO AS TO BE VISIBLE TO PUBLIC FROM RIGHT-OF-WAY.

SITE SIGN SCHEDULE

- TEMPORARY CONSTRUCTION SIGN:**
TYPE: COMING SOON
DETAIL: REFER TO 1/SG1.2
- SITE SIGN:**
TYPE: POLE (6'H X 18'W X 30' H.)
DETAIL: REFER TO 2/SG1.2

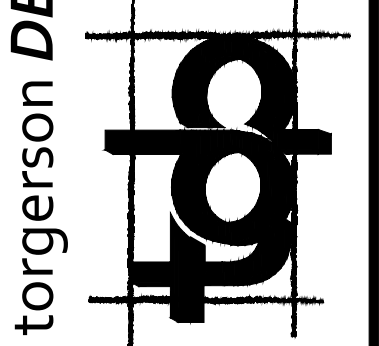
NOTE:
REFER TO SHEET SG1.3 FOR FOUNDATION
SYSTEM STRUCTURAL REQUIREMENTS.



ARCHITECT OF RECORD
ADAM KREHER
ARCHITECT LICENSE NUMBER
AR98768
06/16/2018

SHEETS BEARING THIS SEAL ARE AUTHENTICATED. RESPONSIBILITY FOR ALL OTHER PLANS, SPECIFICATIONS OR INSTRUMENTS ARE DISCLAIMED.

torgerson DESIGN partners
116 N. 2ND AVENUE
OZARK, MO 65721
P (417) 581-8889
F (417) 581-9002



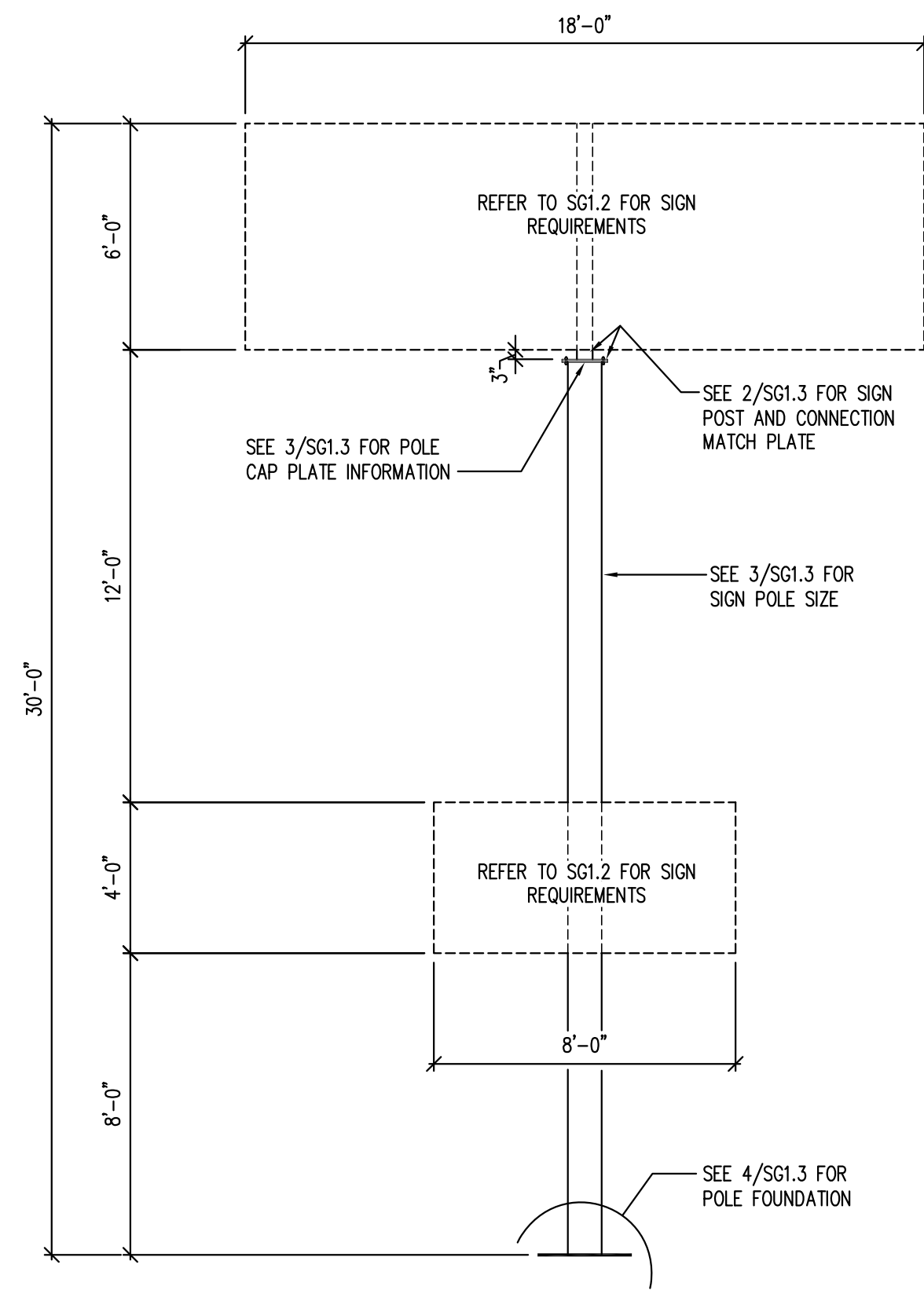
PROJECT:
NEW O'REILLY AUTO PARTS STORE
6179 SW HWY 200
OCALA, FL 34476

SITE SIGNAGE DETAILS

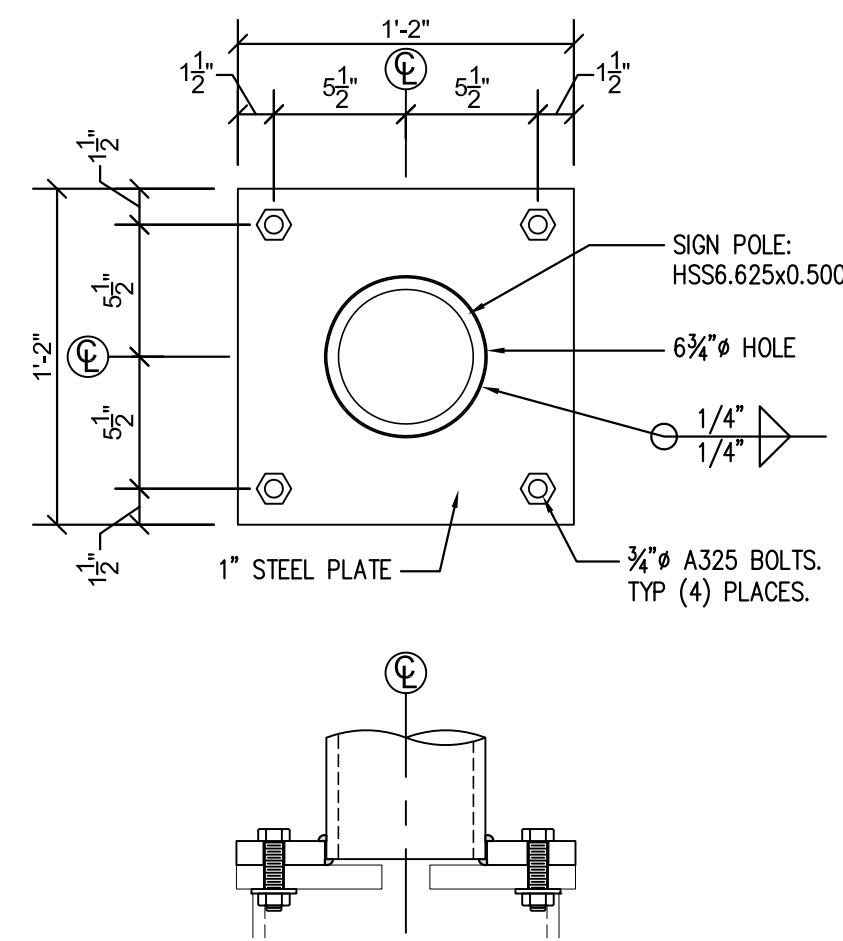


DRAWN BY:	CHECKED BY:
NO	KR
DATE:	
JUNE 15, 2018	
REVISION:	
PROJECT NUMBER:	
18078-OF4	
SHEET NUMBER	

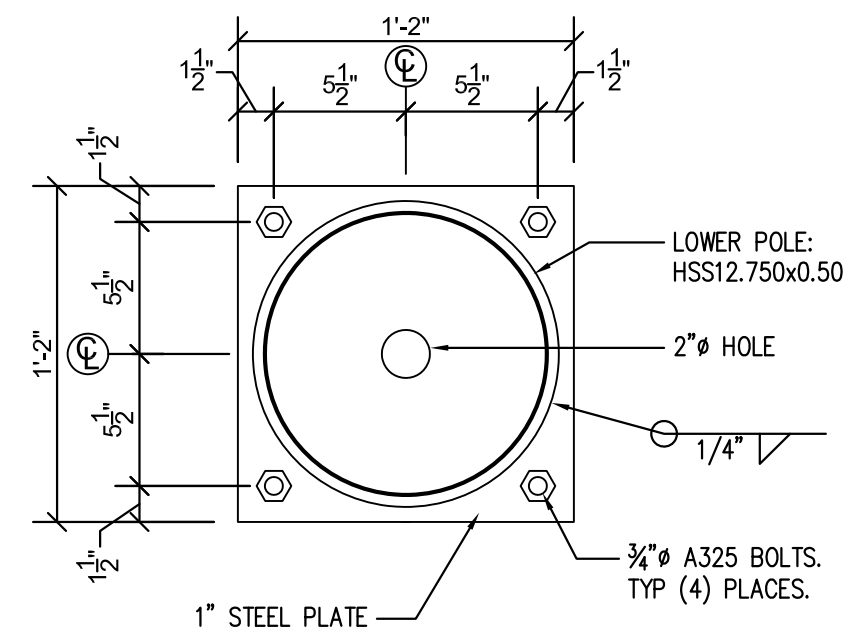
SG1.2



1 GROUND SIGN ELEVATION
SG1.3 SCALE: 1/4" = 1'-0" (SEE SITE PLAN FOR LOCATION)

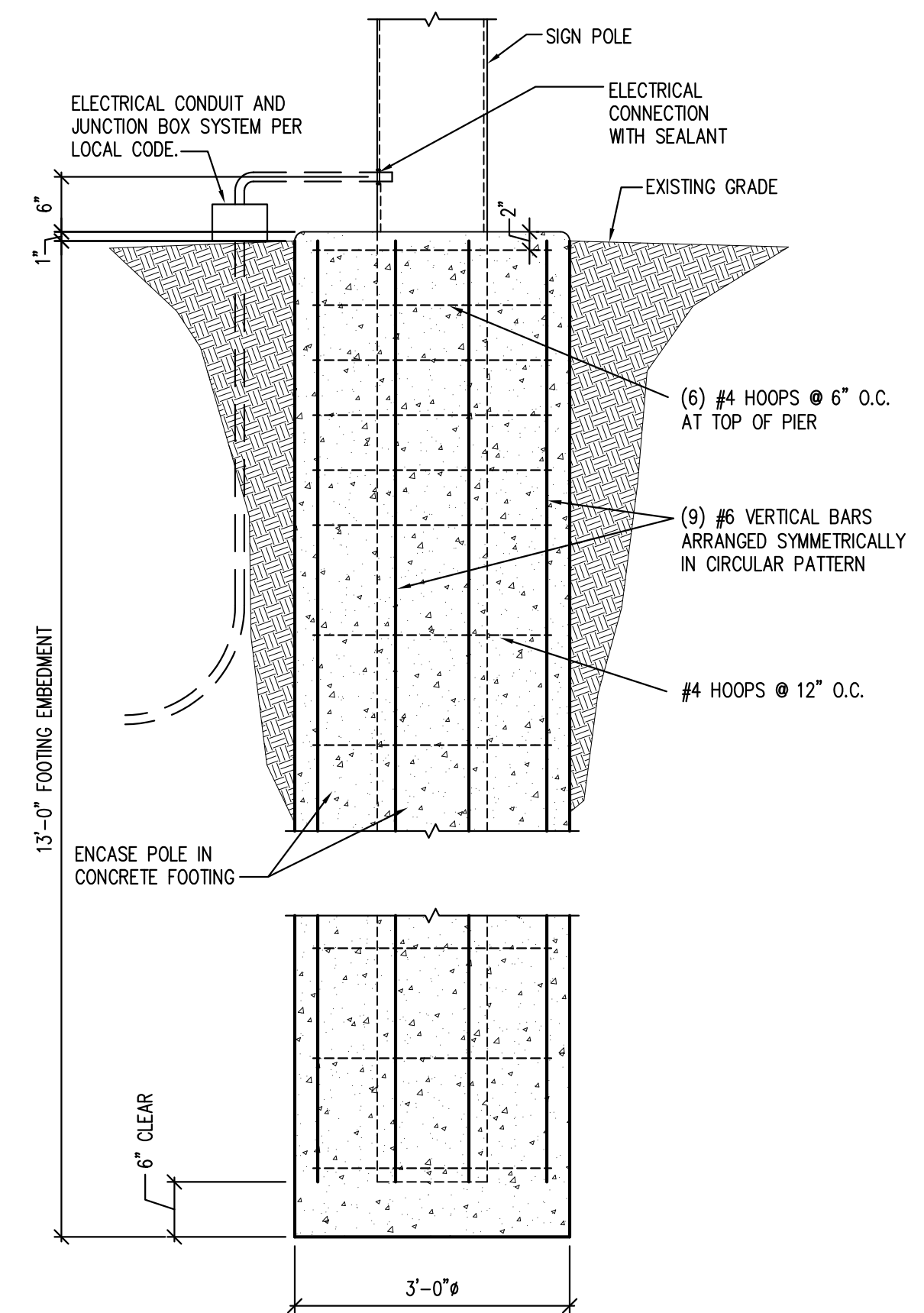


2 SIGN MATCH PLATE
SG1.3 SCALE: 1 1/2" = 1'-0"



3 POLE CAP PLATE
SG1.3 SCALE: 1 1/2" = 1'-0"

NOTE:
 VERIFY LOCATION PRIOR TO POURING TO
 ASSURE NO INTERFERENCE WITH ALL UTILITIES



4 POLE FOUNDATION SECTION
SG1.3 SCALE: 3/4" = 1'-0"

GENERAL NOTES

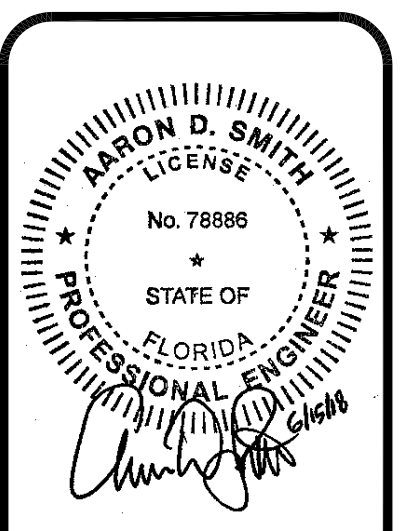
- A. REFER TO PROJECT MANUAL FOR ADDITIONAL REQUIREMENTS.
- B. CONTACT OWNER'S OR TENANT'S DESIGNATED PROJECT ADMINISTRATOR FOR QUESTIONS OR CLARIFICATIONS.
- C. SITE SIGN FOUNDATIONS AND ROUGH-IN ELECTRICAL TO BE PROVIDED BY CONTRACTOR.
- D. REQUIRED GOVERNMENTAL PERMITS FOR PERMANENT TYPE SIGNAGE TO BE PROVIDED BY OWNER OR OTHERS (N.I.C.).

DESIGN CRITERIA

- A. **GOVERNING BUILDING CODE**
 2017 FLORIDA BUILDING CODE (2015 IBC)
- B. **WIND CRITERIA:**
 - B.1. RISK CATEGORY II
 - B.2. $V_{100} = 140$ mph
 - B.3. $V_{50} = 108.4$ mph
 - B.4. EXPOSURE "C"
- C. **SEISMIC CRITERIA:**
 - C.1. SITE CLASS = E
 - C.2. $SDC = B$
 - C.3. $S_s = 0.078$
 - C.4. $S_1 = 0.041$
 - C.5. $S_{vs} = 0.130$
 - C.6. $S_{pi} = 0.096$

STRUCTURAL NOTES

- A. A GEOTECHNICAL ANALYSIS HAS BEEN PERFORMED ON THIS SITE. SEE PROJECT MANUAL FOR GEOTECHNICAL INFORMATION. APPROPRIATE RECOMMENDATIONS STATED IN THE GEOTECHNICAL REPORT ISSUED BY UNIVERSAL ENGINEERING SCIENCES DATED FEBRUARY 27, 2018 SHALL BE FOLLOWED.
- B. THESE FOUNDATIONS HAVE BEEN DESIGNED FOR A VERTICAL SOIL BEARING OF 2000 psf AND LATERAL BEARING OF 250 psf/ft.
- C. ALL READY MIX CONCRETE SHALL BE 4000 psi FOR ALL CONCRETE PLACEMENT. DO NOT ADD WATER TO THE MIX DESIGN AFTER DELIVERY TO THE PROJECT SITE.
- D. EXPOSED EXTERIOR CONCRETE SHALL BE AIR-ENTRAINED (TOTAL AIR CONTENT = 5%).
- E. HOT OR COLD WEATHER CONCRETING SHALL BE IN ACCORDANCE WITH ACI 305-89 AND ACI 306-1-90, RESPECTIVELY.
- F. ANY CONCRETE PLACED BY MEANS OF PUMPING SHALL BE DONE IN ACCORDANCE WITH ACI 304.2R (82).
- G. CEMENT SHALL CONFORM TO A.S.T.M. C-150 TYPE III.
- H. AGGREGATES SHALL CONFORM TO A.S.T.M. C-33 FOR NORMAL WEIGHT CONCRETE.
- I. READY MIX CONCRETE SHALL BE MIXED AND DELIVERED IN ACCORDANCE WITH A.S.T.M. C-94.
- J. ADMIXTURES MAY BE USED WITH THE APPROVAL OF THE STRUCTURAL ENGINEER. ADMIXTURES USED TO INCREASE THE WORKABILITY OF THE CONCRETE SHALL NOT BE CONSIDERED TO REDUCE THE CEMENT CONTENT. NO CALCIUM CHLORIDE ADMIXTURES ALLOWED.
- K. FABRICATOR QUALIFICATIONS: FABRICATOR MUST PARTICIPATE IN THE AISC QUALITY CONTROL PROGRAM AND BE DESIGNATED AN AISC-CERTIFIED PLANT.
- L. **MATERIALS:**
 - STRUCTURAL STEEL..... ASTM A992, GRADE 50ksi
 - PLATES, ANGLES, AND MISC STEEL..... ASTM A36ksi
 - ANCHOR RODS..... ASTM F1554, GRADE 36
 - HIGH STRENGTH BOLTS ASTM A325 (OF NORTH AMERICAN MANUFACTURE)
 - WELDING ELECTRODES..... AWS A5.1 (E70XX)
 - PIPE..... ASTM A53, GRADE B
 - ROUND HSS..... ASTM A500, GRADE B, Fy = 42ksi



SEALS BEARING THIS SEAL ARE AUTHENTICATED. RESPONSIBILITY FOR ALL OTHER PLANS, SPECIFICATIONS OR INSTRUMENTS ARE DISCLAIMED.

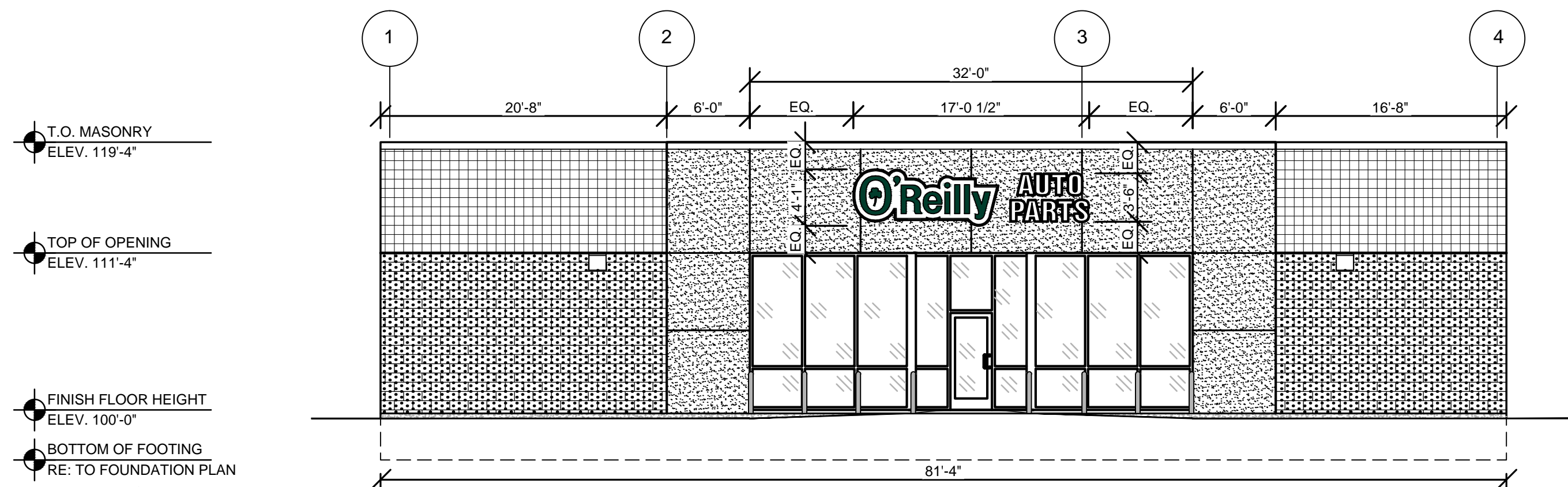
JS Smith Consulting Engineers, P.C.
 Florida State Certificate of Authorization No. 26297
 Aaron D. Smith P.E. 78886 Jeffrey S. Smith P.E. 34027
 P.O. Box 5102 • JOPLIN, MISSOURI 64802
 PHONE: 417-624-0444 • FAX: 417-624-0430

PROJECT:
NEW O'REILLY AUTO PARTS STORE
6179 SW HWY 200
OCALA, FL 34476

O'Reilly AUTO PARTS
 CORPORATE OFFICES
 233 SOUTH PATTERSON
 SPRINGFIELD, MISSOURI 65802
 (417) 862-2674 TELEPHONE

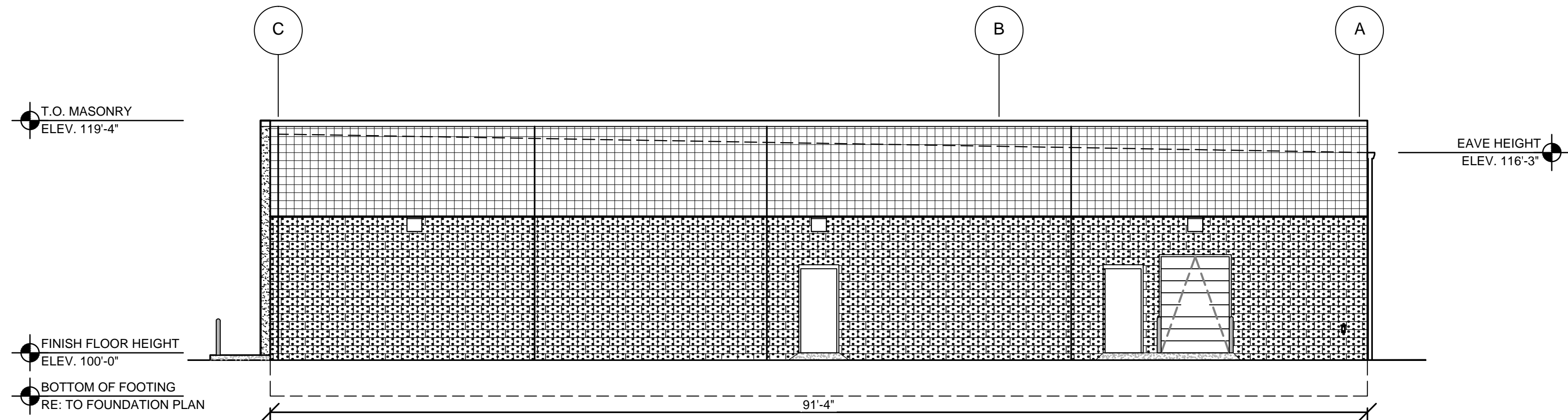
DRAWN BY: **MW** CHECKED BY: **AS**
 DATE: **JUNE 15, 2018**
 REVISION:
 PROJECT NUMBER:
18076-OF4
 SHEET NUMBER:
SG1.3

© COPYRIGHT 2018 — DESIGNS, DRAWINGS AND SPECIFICATIONS ARE INSTRUMENTS OF SERVICE AND ARE THE PROPERTY OF THE DESIGN PROFESSIONAL. REPRODUCTION PROHIBITED WITHOUT THE EXPRESSED WRITTEN CONSENT OF THE DESIGN PROFESSIONAL.



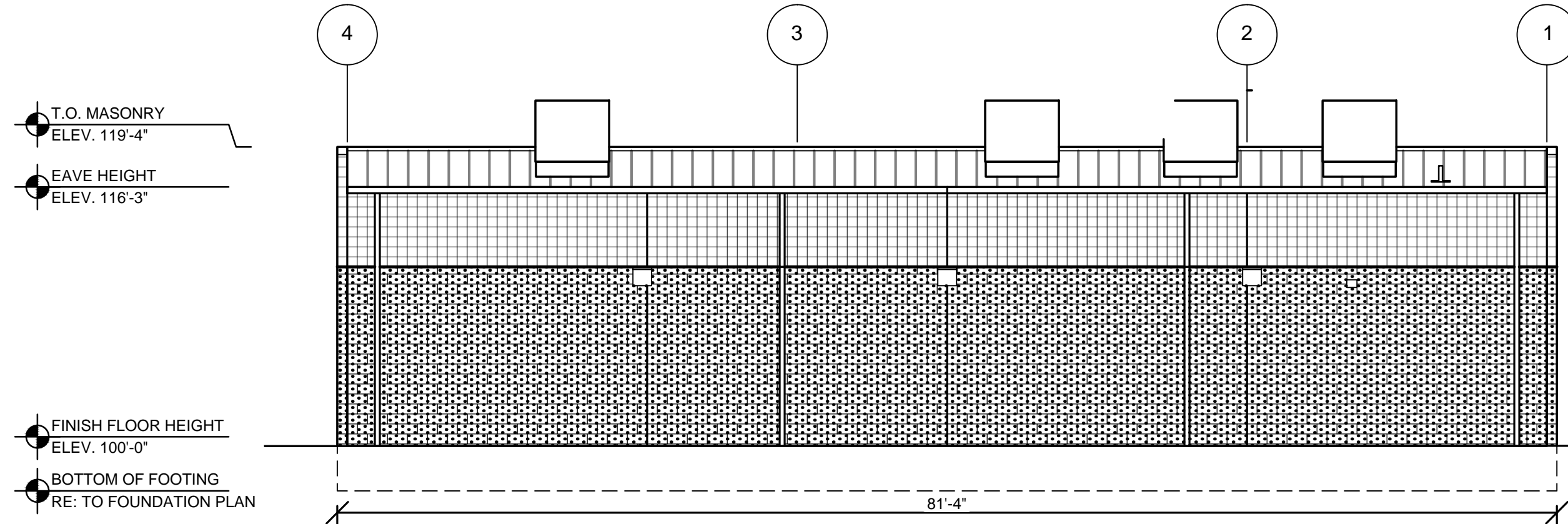
1 FRONT EXTERIOR ELEVATION

SG2.1 SCALE: 1/8" = 1'-0"



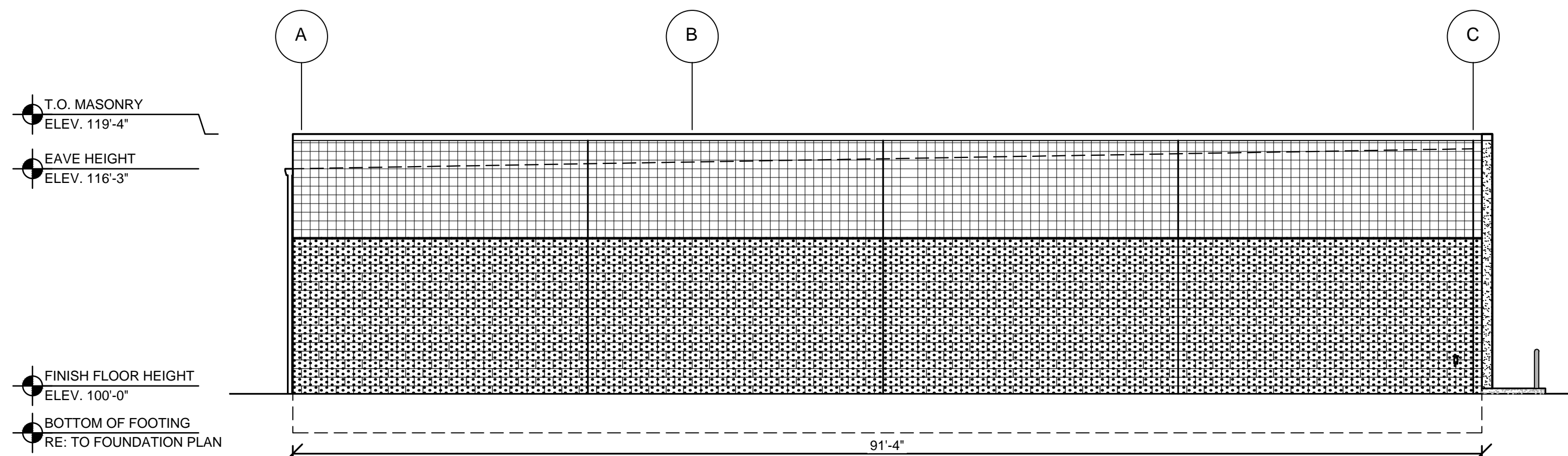
2 RIGHT EXTERIOR ELEVATION

SG2.1 SCALE: 1/8" = 1'-0"



3 REAR EXTERIOR ELEVATION

SG2.1 SCALE: 1/8" = 1'-0"



4 LEFT EXTERIOR ELEVATION

SG2.1 SCALE: 1/8" = 1'-0"

BUILDING SIGN SCHEDULE

FRONT EXTERIOR ELEVATION:
TYPE: OR 49' / 19" AP STACKED
DETAIL: REFER TO 5/SG2.1

RIGHT EXTERIOR ELEVATION:
TYPE: NO SIGN
DETAIL:

LEFT EXTERIOR ELEVATION:
TYPE: NO SIGN
DETAIL:

REAR EXTERIOR ELEVATION:
TYPE: NO SIGN
DETAIL:

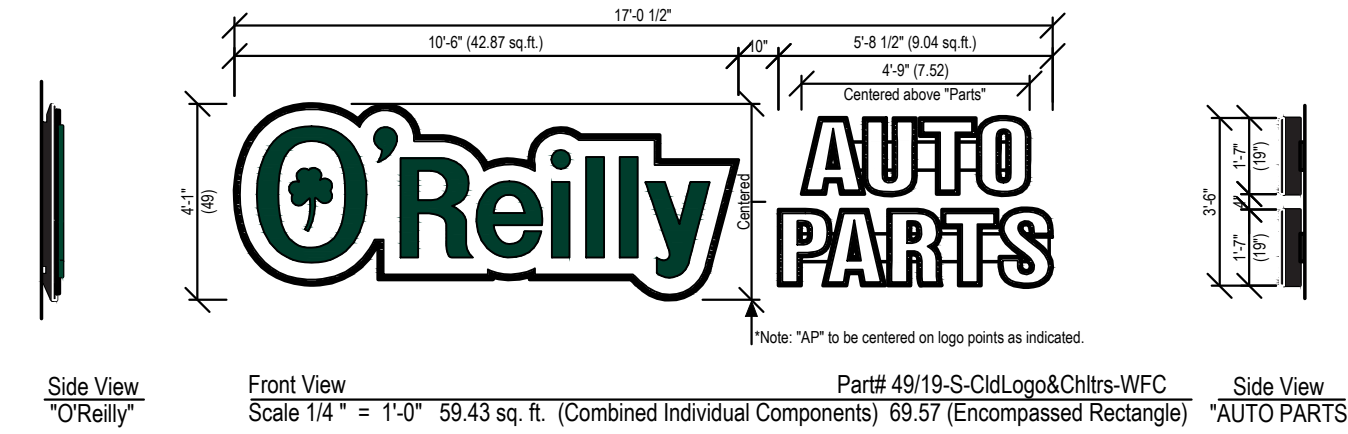
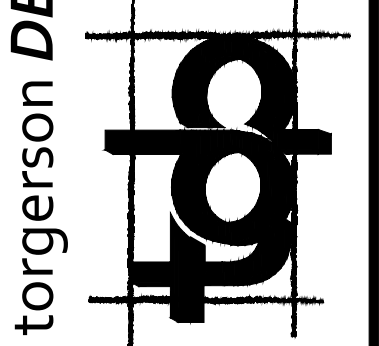
GENERAL NOTES

- A CONTACT OWNER'S OR TENANT'S DESIGNATED PROJECT ADMINISTRATOR FOR QUESTIONS OR CLARIFICATIONS.
- B BUILDING PERMANENT SIGNAGE OWNER FURNISHED AND INSTALLED, (REFER TO SCOPE OF WORK SCHEDULE). SIGNAGE GRAPHICS PROVIDED FOR REFERENCE ONLY (N.I.C.) AND CONTRACTOR'S COORDINATION WITH SPECIFIC PROJECT CONSTRUCTION CONDITIONS. CONTRACTOR TO PROVIDE BACKING AND ROUGH-IN ELECTRICAL AS REQUIRED FOR INSTALLATION. REFER TO A2.1 FOR EXTERIOR BUILDING FINISH.
- C REQUIRED GOVERNMENTAL PERMITS FOR PERMANENT TYPE SIGNAGE TO BE PROVIDED BY OWNER OR OTHERS (N.I.C.).

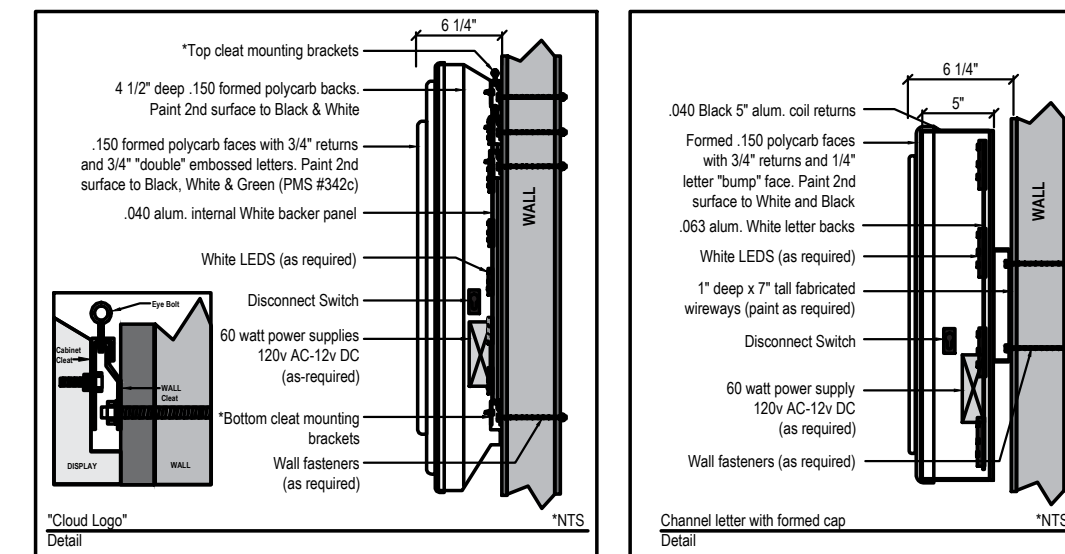


ARCHITECT OF RECORD
ADAM KREHER
ARCHITECT LICENSE NUMBER
AR98768
SHEETS BEARING THIS SEAL ARE AUTHENTICATED. RESPONSIBILITY FOR ALL OTHER PLANS, SPECIFICATIONS OR INSTRUMENTS ARE DISCLAIMED.

torgerson DESIGN partners
116 N. 2ND AVENUE
OZARK, MO 65721
P (417) 581-8889
F (417) 581-9002



"O'Reilly" Cloud Logo with "AP" channel letters on 7" (h) x 1" (d) wireways. Wireways pain to: OAP RED
"O'Reilly" Cloud Logo is formed polycarb with double embossment with 2nd surface painted graphics. Paint match to: Green (PMS# 342c), Black and White.
"AP" to have formed polycarb caps with 1/4" letter "bumps". Black 5" aluminum coil returns. 2nd surface Black and White paint. WHITE LED illumination.



Formed Cloud Logo with "AP" Formed Caps & Channel Returns
Part# 49/19-S-Cld,Logo&Chlrs-WFC

5 FRONT WALL SIGN DETAILS

SG1.1 SCALE: 1/4" = 1'-0"

PROJECT:
NEW O'REILLY AUTO PARTS STORE
6179 SW HWY 200
OCALA, FL 34476
BUILDING EXTERIOR SIGNAGE



DRAWN BY: NO
CHECKED BY: KR
DATE: JUNE 15, 2018
REVISION:
PROJECT NUMBER: 18078-OF4
SHEET NUMBER

SG2.1